

GD 2021/0084.



The Enterprise Act 2008
ANNUAL REPORT
FOR 2020/2021

FEBRUARY 2022



Isle of Man
Government
Reilys Ellan Vannin

Contents

1. Introduction.....	2
2. Covid-related schemes.....	4
2.1. Coronavirus Recovery Scheme	4
2.2. Coronavirus Business Support Scheme (CBSS).....	5
3. Overview of support provided across Enterprise Support	6
4. Background to the Financial Assistance Scheme.....	9
4.1. Average Increase in New Jobs.....	11
4.2. Employee Relocation Incentive	11
4.3. Financial Assistance Scheme statistics for year ended 31 st March 2021	12
4.4. Businesses that received payments under the Financial Assistance Scheme..	14
4.5. Businesses that ceased trading during the year	15
5. Loans and investments via the Enterprise Development Scheme	16
6. Authorisations of employment in the national interest	16
7. Town & Village Regeneration Scheme.....	16

The contents of this document are the property of the Department for Enterprise

1. Introduction

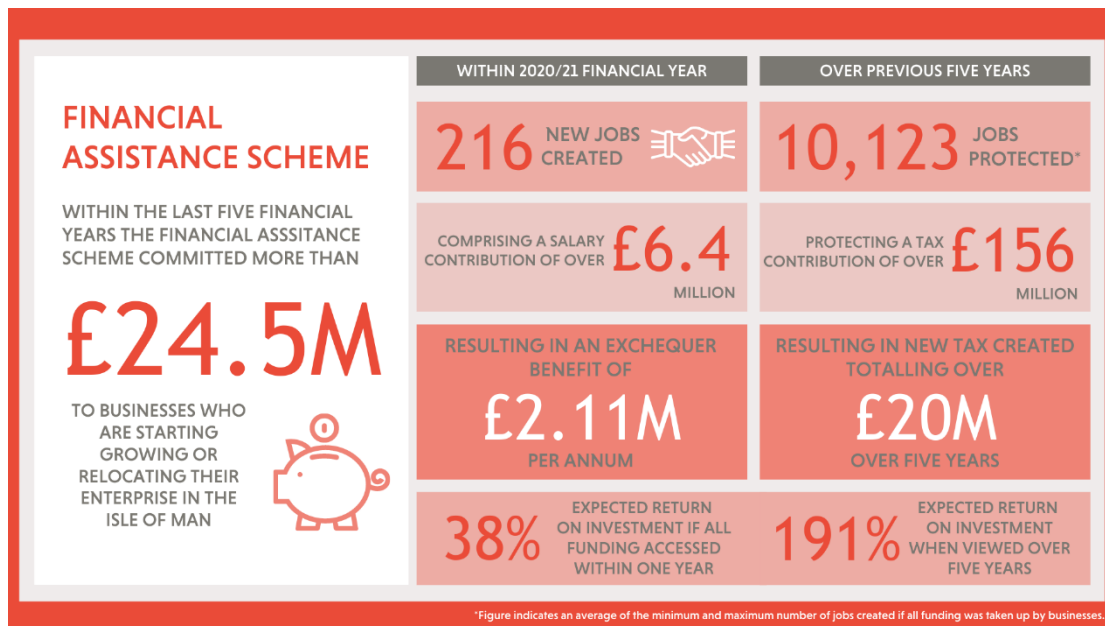
To: The Hon L Skelly, President of Tynwald, and the Honourable Council and Keys in Tynwald assembled;

Under Section 6 of the Enterprise Act 2008 (“the Act”) the Department for Enterprise (DfE) is required to lay an annual report before Tynwald as to the provision of assistance under the Act including a list of the names of those businesses which have received financial assistance from the Department during the previous financial year ended on the 31st March. This is consistent with Government’s intent to act transparently by providing information as to the use of the public funds for Tynwald scrutiny where possible.

The annual report includes details of grants offered and payments made under the Financial Assistance Scheme (FAS) as well as details of loans and investments made to businesses under the Enterprise Development Scheme and the Town Village Regeneration Scheme.

The Department’s Financial Assistance Scheme currently has an annual budget of £3,400,000. This amount was reduced from £3,500,000 as the Department removed the requirement to deduct an administration charges of 2% on any grant payments made, the difference being £100,000 and viewed by the Department as income. Accordingly, a revised budget amount was implemented.

A high level overview of the impact the FAS has had over the past five financial years has been highlighted in the infographic below, demonstrating the value of the Scheme in relation to jobs created, protected, tax contributions protected and created and the overall return on investment achieved over a five year period.



The Financial Assistance Scheme remains an important driver for inward investment and the expansion of local businesses with an export focus. It places an emphasis on job creation and, importantly provides Government with a return on FAS grants, paid via Income Tax and National Insurance contributions.

Our policy level of business risk will lead on occasion to financial assistance given to businesses which do not progress beyond the start-up phase. Other jurisdictions also accept that there will be a level of loss if new sectors are to become a major part of their economies. If we wish to develop the areas of the economy which exploit newer technologies then there has to be an

acceptance that with any risk-based reward model, not all businesses which receive assistance will develop as forecast in the original plan.

The Department understands it is important to demonstrate the value of all its schemes. Therefore year on year, the Department will develop and enhance this annual report to include statistical information on the other business support schemes that it operates. An infographic containing an overview of the support provided by the Department in the financial year 2020/2021 can be found in section 3.

Minister for Enterprise

2. Covid-related schemes

The Enterprise Support function of the Department for Enterprise has been instrumental in the implementation of financial support to provide emergency measures for businesses both on a temporary and ongoing basis. The introduction of 15 new schemes since the Island's initial response to the pandemic has seen a high volume of new workload be undertaken by the team to design, process and administer over 10,000 applications from the Island's business community.

This has undoubtedly had an impact on the administration of business as usual, however, bar a brief period in early 2020, the team have continued to administer the COVID-19 response schemes in conjunction with day-to-day workload.

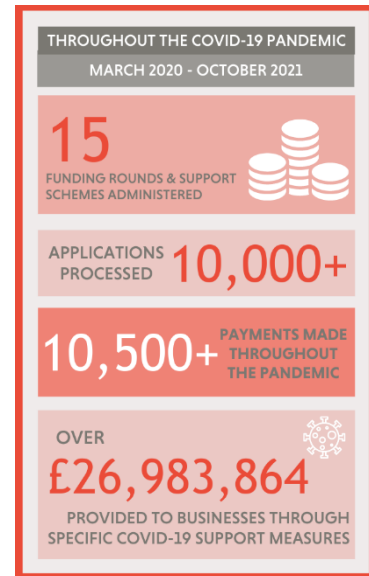
2.1. Coronavirus Recovery Scheme

As outlined, during the financial year ending 31st March 2021 the Department introduced grants to businesses that were adversely impacted throughout the Covid pandemic.

The Coronavirus Recovery Scheme (CRS) was formed under the Coronavirus Business Support Scheme 2020 that came into force on the 25th December 2020 and replaced Appendices 9 and 10 of the Financial Assistance Scheme.

The appendices and subsequent CRS grants supported the costs of adapting a business and/or provided support towards essential ongoing operating costs. The latter financial assistance towards business overheads is available exclusively for businesses operating in the tourism and travel related sectors.

The Department made 116 grant offers to 59 companies, applying for adaptation grants.



2020/21 CRS adaptation applications				
	No.	Gross Approved	Net Approved	Amount Paid
Building	19	243,889	107,004	78,826
Plant & Machinery	48	806,196	359,906	238,131
Marketing	11	54,737	27,369	18,149
Rent	3	64,308	19,292	6,677
First Year Expenses	35	261,334	130,030	76,051
Totals	116	1,430,464	643,601	417,834
2020/21 CRS adaptation by sector				
	No.	Gross Approved	Net Approved	Amount Paid
E-Business	4	45,467	22,734	21,278
Engineering	1	15,000	7,500	7,350
Financial/ Professional	12	150,705	67,440	53,569
Food & Drink	36	635,353	298,310	191,611
Health	7	40,046	20,023	11,837
Media	5	196,287	54,946	29,403
Retail	31	206,976	103,492	43,222
Service Provider	7	20,199	10,100	8,702
Tourism & Leisure	13	120,431	59,056	50,862
Totals	116	1,430,464	643,601	417,834

The Department made 35 grant offers to 17 companies that applied for grants linked to business overhead expenditure.

2020/21 CRS Overheads applications				
	No.	Gross Approved	Net Approved	Amount Paid
Marketing	1	2,725	1,363	
First Year Expenses	34	1,364,915	637,791	372,887.54
Totals	35	1,367,640	639,154	372,887.54
2020/21 CRS Overheads by Sector				
First Year Expenses				
	No.	Gross Approved	Net Approved	Amount Paid
Food & Drink	3	210,878	59,892	59,520.25
Retail	1	112,502	56,251	16,666.11
Tourism & Leisure	30	1,041,535	521,648	296,701.18
Totals	34	1,364,915	637,791	372,887.54
Marketing				
Tourism & Leisure	1	2,725	1,363	0.00
Totals	1	2,725	1,363	0.00

2.2. Coronavirus Business Support Scheme (CBSS)

The financial year 2020/21 began with the Enterprise Support Division's primary focus being to financially support businesses and self-employed individuals at the outset of the global Coronavirus pandemic. The Division worked closely with Treasury (Income Tax Division, Customs & Excise and Internal Audit) and responded very quickly to devise and launch the CBSS in March 2020. The Division's staff numbers were increased to meet the demand of this new scheme. Various iterations of the Scheme then continued for the remainder of the financial year and an overview of each scheme is summarised below: -

2.3. CBSS

The first Covid-19 support to be launched on 17th March 2020 aimed at supporting business and individuals during the first lockdown. This scheme underwent many changes to the eligibility requirements (Sectors and business structures etc) as the understanding of the effects of the pandemic on business became known. This Scheme offered a single payment of £3,000 and closed on 11th June 2021.

2.4. CBSS rounds 2-4

These Schemes succeeded the initial CBSS "lockdown" Scheme and supported businesses without staff and self-employed individuals in the tourism and travel sectors affected by the ongoing border restrictions. In order to be eligible, a business' turnover needed to be 50% down in the qualifying periods and the businesses were required to be able to attribute more than 50% of their income from tourism and travel related activities. These Schemes offered a single payment of £3,000 (CBSS2 applicants received £3,000 minus any MERA payments received) and opened for applications on Friday 10th July 2020 and closed on Tuesday 1st June 2021.

2.5. Circuit Break Lockdown versions 1&2 (CBL1 & CBL2)

These Schemes were devised to support businesses during the January 2021 and March 2021 circuit break lockdowns. The Schemes opened on 14th January 2021 and closed on 11th June

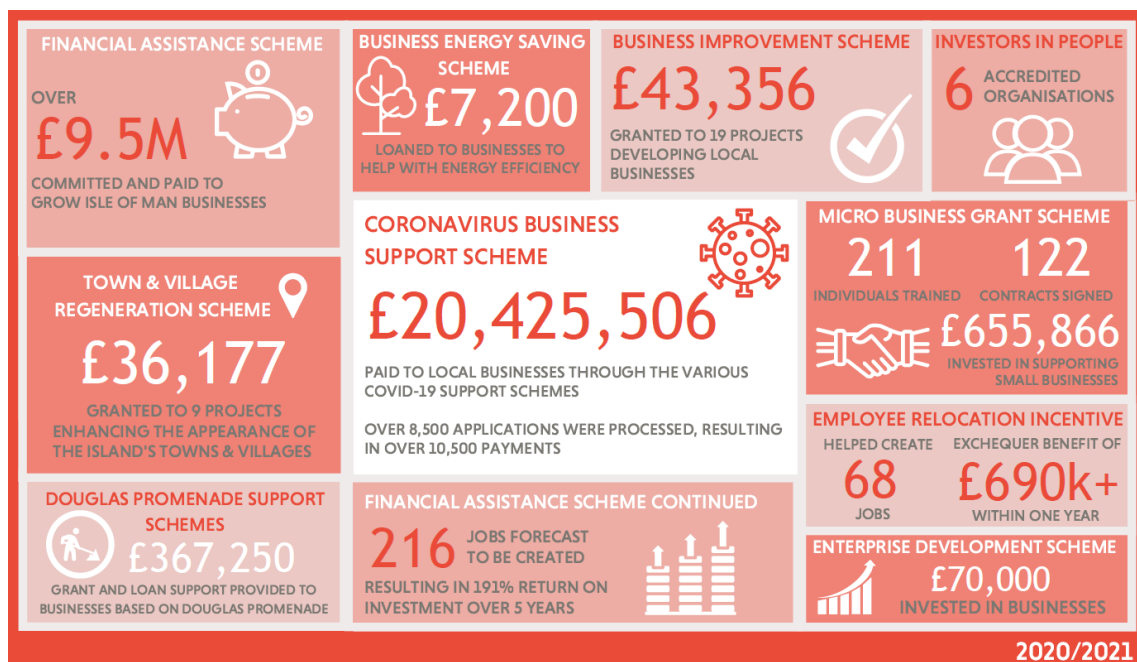
2021. These Schemes supported businesses with business operating overheads of more than £250 per month. CBL1 paid grants of £1,500 to eligible applicants. CBL2 paid grants of up to £3,500, but certain sectors less affected by this second circuit break lockdown e.g. construction received a reduced amount of £2,500.

The payment details to each of these schemes in the financial year 2020/21 are summarised below: -

Version	Applications processed	Payments	Amount Paid
CBSS	2800	2971	£8,913,000
CBSS2	107	67	£185,497
CBSS3	86	73	£219,000
CBSS4	92	50	£150,000
Circuit Break Lockdown - Round 1	2662	2481	£3,721,500
Circuit Break Lockdown - Round 2	2671	4855	£6,372,500
	8418	10497	£19,561,497

3. Overview of support provided across Enterprise Support

Over the past financial year the schemes have achieved the following:



The following table outlines the financial support provided by each of the Enterprise Support Schemes throughout the past financial year, and previous five financial years (where applicable).

Key								
	Not applicable to specific scheme							
Figure 1: Financial Year 2020/2021								
Scheme	Amount committed	Jobs created (average)	Jobs Created Exchequer Benefit (per annum)	Jobs protected	Tax Protected (2020-2021)	Matched Investment (min.)	Draw-down period (max.)	Money actually paid (by DfE)
FAS (and associated grants)	£6,718,875	284	£2,347,133	1,965	£26,161,750	£12,743,789	2 years	£4,948,531
MBGS	£655,866	122					18 months	£655,866
BIS	£43,356					£43,356	2 years	£43,356
TVRS	£36,177					£36,177	2 years	£36,177
IIP	£650							£650
BESS	£7,200							6 loans outstanding
Figure 2: Previous Three Financial Years								
Scheme	Amount committed	Jobs created (average)	Jobs Created Exchequer Benefit (per annum)	Jobs protected	Tax Protected (2018/19-2020/21)	Matched Investment (min.)	Draw-down period (max.)	Money actually paid (by DfE)
FAS (and associated grants)	£15,516,785	688	£7,011,862	7,649	£116,914,750	£28,807,014	2 years	£12,541,040

Figure 1 demonstrates that in the previous financial year the Financial Assistance Scheme (and associated grants) has committed over **£6.7million** towards starting and growing businesses in the Isle of Man.

The average number of jobs this funding will create within the Island is **284**, taken from the minimum and maximum which are required for the business to create to access the full funding committed.

These new jobs will contribute an **exchequer benefit** to the Island of **over £2.3million** per annum. Given this, the expected return period on the investment made in these businesses means that the Isle of Man economy will **break even within three years**.

In addition to this, supporting these businesses to invest in expanding and enhancing their operations means the funding **protects 1,965 jobs in the Island** which when combined **contribute over £26million in tax** which is protected each year.

Furthermore, by providing support through the Financial Assistance Scheme, we have in turn unlocked over **£12.7million of private investment** which businesses have contributed back into the local economy.

Figure 1 also aims to demonstrate the overall funding which has been provided across the Enterprise Support Schemes, however as each Scheme is operated differently, it can be difficult to compare like-for-like. The following section outlines some of the Schemes which are not referenced in detail within this report and the key contribution they provide to the Island's business ecosystem and economy.

- The **Micro Business Grant Scheme** provides a valuable contribution to safeguarding the Island's reputation as a place where entrepreneurialism is encouraged. Supporting those who would like to start a business is an important measure which ensures we are supporting home grown talent, and encouraging more businesses to choose the Isle of Man as a supportive place to innovate. In the past five financial years, 469 new businesses have been formed through the Scheme, which not only creates economic value in regards to taxation, and fees to the companies registry but also as an additional avenue to support the unemployed back into work.
- The **Business Improvement Scheme** provides the key contribution of stimulating spending by businesses within the local community and fosters a culture of continuous improvement which contributes to our Island remaining a desirable place to live, work and do business. Over the past five financial years this has comprised over £292,000 investment into improving the offering of Isle of Man businesses. Throughout the COVID-19 pandemic, additional funding (facilitated by the Economic Recovery Group) has provided support for businesses to increase their digital footprint which has been essential to ensuring businesses were able to trade online during periods of difficulty.
- The **Town & Village Regeneration Scheme** was launched in 2020 and has invested £36,177 into improving the Island's towns and villages, providing amenity sites and improving the visual appearance of areas in the Island. Regeneration of our Island is essential to enhance our proposition for both residents and visitors and to be regarded as a destination which is investing in maintaining the Island's infrastructure. In addition to this, the investment made through this Scheme provides positive effects on the construction industry by stimulating activity in the sector.
- The **Investors in People** Scheme encourages businesses to invest in receiving an accreditation which demonstrates their commitment to providing positive training and development opportunities for people within the business environment. The Department's support of this accreditation helps Island businesses to enhance their offering, contributing to them becoming desirable places to work, which in turn supports the work of Locate Isle of Man to attract skills and increase the Island's economically active population.
- In recent years there has been a heightened global interest in the environmental agenda, and the Isle of Man Government's own response sets ambitious targets through its Climate Change Action Plan. The **Business Energy Saving Scheme** has provided seven loans in the past five years to businesses to support as they took steps to ensure their operations were more energy efficient. Whilst uptake on this Scheme has been slow to start with, the increasing pressure on businesses to be mindful of their energy usage is increasing, and the availability of this Scheme will further support the Island's environmental agenda.

4. Background to the Financial Assistance Scheme

The principal purpose of providing Financial Assistance Scheme (FAS) assistance is to encourage existing businesses to grow and become more efficient and attract inward investment to the Isle of Man. This in turn provides economic benefits (for example, revenue, jobs, profits, expenditure in the local economy) and associated fiscal benefits (direct and indirect taxes) which exceed the cost of the support provided.

The FAS is a discretionary support scheme which offers grants and other forms of assistance to both existing and new Isle of Man registered businesses. The focus of the support is on those sectors and businesses which can provide evidence of the likely attainment of the benefits sought.

Under the Enterprise Act 2008, DfE may provide assistance to an eligible business where, in its opinion:

- the eligible business undertakes or will undertake economic activity in the Island;
- the assistance is likely to encourage sustainable economic growth in the Island; and
- the form and amount of the assistance is reasonable having regards to all the circumstances.

“Eligible business” is defined in regulations made under the Act which set out the standard requirements all businesses must meet.

In addition to meeting the environmental and commercial criteria imposed by the regulations, a business must fall within the current policy of DfE. In this regard, support may be considered in respect of businesses that meets the following definition:

“Any business providing products and / or services for export in sectors where support is not available through other Departments”

This includes partial export where the percentage of grant support offered would be linked to the export benefits and import substitution where the products or services are not currently available in the Isle of Man.

Support is offered to businesses which generate economic benefit for the Island, the main considerations as to whether support should be offered being:

- Job growth/creation
- Salary levels
- Spend in the local economy
- Range of jobs

There are a number of other factors that DfE applies when considering an application for financial assistance via FAS grants in order to meet other economic, social and wider Government objectives. These include:

- geographical diversification (jobs created outside Douglas and the rest of the Eastern area, may attract more support);
- sector diversification (new sectors which help to reduce overall over-reliance on the economy as a whole may attract more support);
- diversification of employment base (applications which seek to provide a range of jobs to aid full employment may attract more support); and
- protection of historic businesses/sectors (where a particular business is considered to have made an important, long-standing contribution to the Isle of Man).

The discretionary nature of the Scheme, which is intended to provide the Department with a high degree of flexibility, has already been mentioned. In terms of the likely rates of support available the following factors are also taken into consideration:

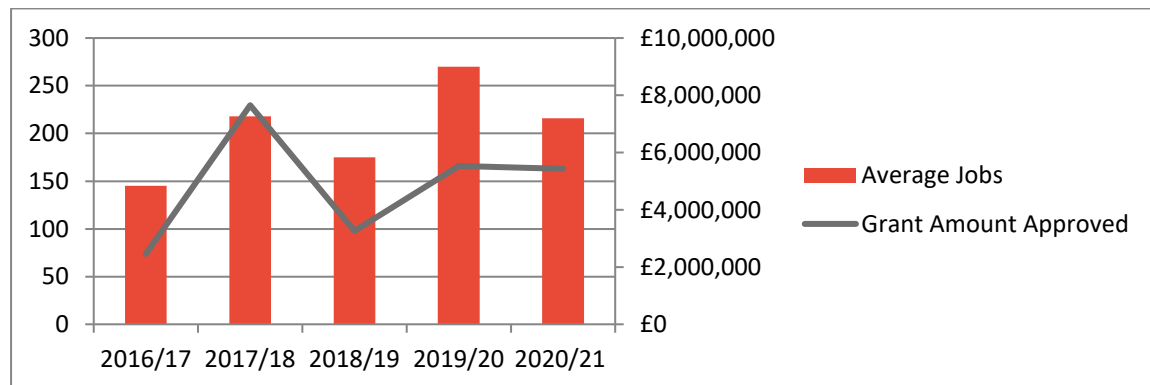
- *Additionality* – projects which grow the business and the economy are supported. In general, the owners of the business are expected to replace redundant equipment at their own expense, whereas a grant application for new equipment which will expand the product range, generate new revenue and thus increase jobs and taxes would be considered more likely to receive, support.
- *Proportionality* – the level of support in relation to the economic and fiscal benefits forecast and likelihood of the project’s success. For example, a business seeking £1m grant for a project which will generate only one job locally will not receive the maximum level of assistance of 40%. This is reflected in the wording of the guidelines; “The level of financial assistance offered is proportionate to the economic and fiscal benefits forecast, the number and value of jobs being created, and perceived likelihood of success”.
- *Risk* – the likelihood of the project’s success. Where a project is perceived to be high risk, grant support may be conditional upon the business achieving specified levels of growth based on the applicant’s business plan. Furthermore, security may be required in order to mitigate the risk of losses to DfE in the event of a business failing by enabling the Department to recover any grants paid or portion of grants paid. Security may take the form, but is not limited to, fixed charges upon land and buildings, floating charges, or Directors’ Guarantees. Also, where projects are judged to be high risk, staged payment of grants may be conditional upon achieving specified levels of turnover, profit, salaries, local spend, or employment numbers based on the applicant’s business plan.
- *Sector* – support is primarily directed at export-earning sectors as these are key to the growth of the economy. While secondary, domestically-focussed sectors (such as construction, retail, and miscellaneous services such as hairdressing and cleaning) also play an important role in ensuring the Isle of Man is an attractive place to work and live, aiding such sectors is less likely to increase economic growth. It may also create competition issues in that assisting one local business may be at the expense of another. Consequently, it is DfE’s policy that secondary sectors are not usually eligible for support under the Scheme with the exception of certain circumstances in relation to leisure-type activities.
- *Living Wage* – businesses that pay its employees at least the living wage are more likely to receive a higher level of grant assistance (up to 40%) than those who only pay the minimum wage.
- *Single Use Plastics and Recycling* – Single-use plastics represents an unsustainable use of resources and makes a significant contribution to global greenhouse gas emissions. A business is more likely to achieve a higher rate of assistance if it has an internal sustainable sourcing and recycling policy or is working towards an ISO 14001 standard.

4.1. Average Increase in New Jobs

As previously detailed the FAS grant system focuses on job creation, this provides the Government with a Return on Investment (ROI).

The number of jobs created for local residents averaged at 216 for the £5.54m that the Department offered to businesses, the Department expect an ROI of £2.11m per annum from these newly created jobs returned to the exchequer, which over a five year period equates to £10.57m equating to a ROI of 191% over the five year period.

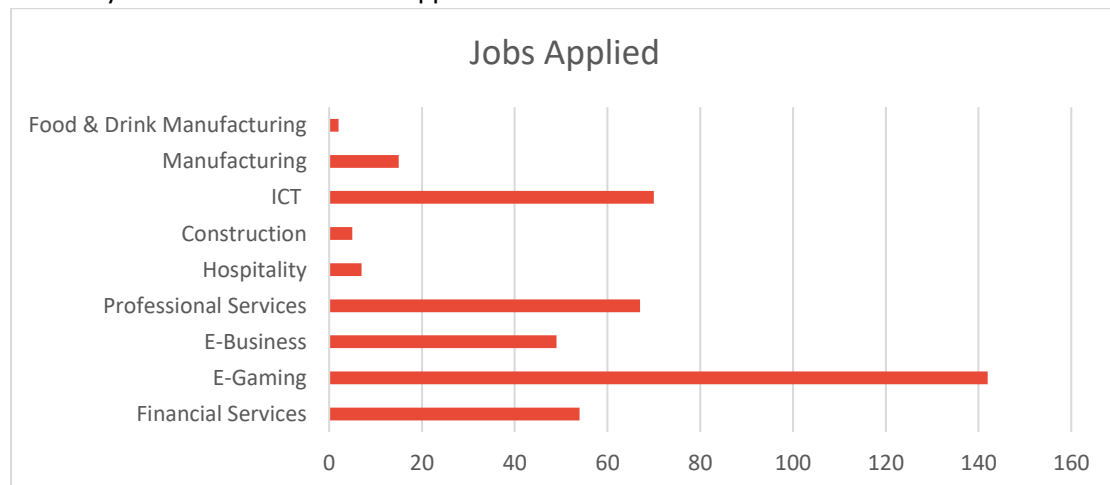
With regards to the FAS applications, to mitigate the risk, offers are often caveated to pay out approved grants in tranches, as and when jobs created have been confirmed by the applicant and checked by the Department and confirmed to be in-line with the specific Terms & Conditions.



4.2. Employee Relocation Incentive

The Department launched the Employee Relocation Incentive (ERI) in November 2016 following policy discussions with the National Strategy Group and Council of Ministers. It was one of a number of initiatives considered which were designed to quickly accelerate economic growth and, more specifically, growth of the working population. The ERI has been extended year on year.

The assistance is provided to the business retrospectively, after the first year that the employee has relocated. It is often used to assist with relocation costs, incentivising the business to provide a relocation package for the employee; however, others may use the grant to reach suitable off-Island candidates or meet the costs of using recruitment agencies. Below is a summary of the different sectors applications for the ERI:



The Scheme has been active for five financial years, although not marketed actively in the first year the popularity of the Scheme increased, offering grants for over 400 jobs:

Financial Year Applied	No of Applications Approved	No of Jobs	Total Grant Amount Offered	Number of Jobs Claimed	% of Jobs Claimed	Total Grant Amount Claimed	% Grant Claimed
2016/17	11	70	£534,408	26	37.14%	£178,268	33.36%
2017/18	21	139	£1,044,162	23	16.55%	£176,124	16.87%
2018/19	36	72	£554,720	49	68.06%	£25,934	4.68%
2019/20	43	62	£465,722	29	46.77%	£357,739	76.81%
2020/21	25	68	£440,656	15	22.06%	£102,476	23.26%
Total	136	411	£3,039,668	142	34.55%	£840,541	27.65%

4.3. Financial Assistance Scheme statistics for year ended 31st March 2021

Grants offers

During the year ended 31st March 2021 the Department made grant offers to 40 companies, compared to the previous year when 67 offers were made. Comparable figures for the previous five years ending 31st March have been included in the below tables.

	2016/17		2017/18		2018/19		2019/20		2020/21	
	No.	Amount of offers £	No.	Amount of offers £	No.	Amount of offers £	No.	Amount of offers £	No.	Amount of offers £
Offers to new Companies	12	450,248	12	447,975	12	531,301	18	1,381,713	10	1,062,503
Offers to existing Companies	28	2,010,167	35	7,204,701	53	2,731,140	49	4,153,756	30	4,373,617
Totals	40	2,460,415	47	7,652,676	65	3,262,441	67	5,535,469	40	5,436,120

The number of offers made during the year total 90 across the grant categories. This figure has decreased when compared to the previous year of 119. The below table is a split into offers made across the grant categories to new and existing businesses.

Number of applications across grant categories										
Type of Grant	2016/17		2017/18		2018/19		2019/20		2020/21	
	New	Extant	New	Extant	New	Extant	New	Extant	New	Existing
Building	4	7	4	7	2	6	5	5	2	7
Plant & Machinery	11	16	9	15	8	17	11	14	7	14
Marketing	11	14	8	10	5	7	9	7	5	4
Rent	7	4	6	2	5	1	7	2	6	2
First Year Expenses	5	8	6	7	5	7	9	4	5	8
Training	4	4	2	5	0	1	1	2	0	1
Relocation Incentive	2	8	3	18	4	32	8	35	8	17
R & D	0	0	0	0	0	0	0	0	1	1
Efficiency Measures	0	0	0	0	0	0	0	0	0	0
Loan	0	0	0	0	0	0	0	0	0	0
Repayable Grant	0	0	0	0	0	0	0	0	0	2
Totals	44	61	38	64	29	71	50	69	34	56

The offers totalled £5.44 million¹ and the average percentage of support offered was 32.6%, this being 1% lower than the previous years' level of 33.6%. The level of support is measured

¹ The number that is shown is rounded

through the exchequer benefit created from forecasted new jobs, new construction work, and the Department's aim is to see any investment made returned within a maximum five year period.

The £5.54 million equates to a proposed investment from the private sector of £11.23 million² by local businesses compared to £9.28 million³ in the previous year.

Amount of grants offered to new & existing businesses										
Type of Grant	2016/17		2017/18		2018/19		2019/20		2020/21	
	New £'000	Extant £'000	New £'000	Extant £'000	New £'000	Extant £'000	New £'000	Extant £'000	New £	Existing £
Building	53	405	14	3,498	85	949	202	1,182	51,586	889,925
Plant & Machinery	137	864	147	1,658	152	1,099	530	2,318	349,935	2,550,663
Marketing	138	104	134	127	84	89	236	165	127,927	21,910
Rent	40	46	44	22	74	2	77	15	232,593	21,088
First Year Expenses	26	81	32	252	86	86	153	42	61,364	288,107
Training	8	22	4	213	0	2	1	148	0	98
Relocation Incentive	48	486	73	971	50	504	183	283	214,098	226,558
R&D	0	0	0	0	0	0	0	0	25,000	277,722
Efficiency Measures	0	0	0	0	0	0	0	0	0	0
Loan	0	0	0	0	0	0	0	0	0	0
Repayable Grant	0	0	0	0	0	0	0	0	0	97,546
Totals	450	2,010	448	7,260	531	2,731	1,382	4,153	1,062,503	4,373,617

Potential company spend by new and existing businesses linked to the grant offers above										
Type of Grant	2016/17		2017/18		2018/19		2019/20		2020/21	
	New £'000	Extant £'000	New £'000	Extant £'000	New £'000	Extant £'000	New £'000	Extant £'000	New £	Existing £
Building	97	1,462	39	10,598	233	1,660	206	1,791	90,370	3,153,436
Plant & Machinery	285	1,474	430	3,170	251	1,568	819	2,834	730,757	3,411,328
Marketing	249	215	320	372	199	250	449	331	286,127	30,990
Rent	75	62	85	38	21	3	80	23	85,410	20,062
First Year Expenses	51	133	82	571	176	175	229	64	106,469	618,570
Training	14	35	10	636	0	2	1	222	0	924
Relocation Incentive	192	1,946	370	5,714	202	2,046	1,101	1,133	867,012	906,232
R&D	0	0	0	0	0	0	0	0	88,219	833,164
Efficiency Measures	0	0	0	0	0	0	0	0	0	0
Loan	0	0	0	0	0	0	0	0	0	0
Repayable Grant	0	0	0	0	0	0	0	0	0	0
Totals	963	5,327	1,336	21,099	1,082	5,704	2,885	6,398	2,254,364	8,974,706

FAS Loan offers

² As above

³ As above

On occasion the Department offers alternative types of assistance to businesses, the most common being working capital loans. However, the Department did not make any loan offers in the period covered by this report and it did not make any loans offered in the previous financial year.

New business offers

In the year ended 31st March 2021, 10 of the 40 total offers were made to new companies, this being lower than the previous year, where 18 offers were made to new companies out of the 67 offers that were made in total.

The sector breakdown of offers made to new businesses is as follows:

	2016/17	2017/18	2018/19	2019/2020	2020/21
Engineering	0	0	1	0	0
General Manufacturing (incl. Food & Drink)	4	3	2	3	1
Financial & Professional Services	1	2	3	3	4
ICT (incl. E-Gaming & E-Business)	4	4	4	9	3
Other	3	3	2	3	2
Total	12	12	12	18	10

Total amount of financial assistance offered

The total amount of financial assistance offered this year was £5,436,120, compared to £5,535,469 in the previous year.

Total amount of assistance paid

The total amount of assistance paid out in the year ending 31st March 2021 was £4,071,753 compared to £3,017,751 in the previous year. The value of payments made varies from year to year because grant payments, excluding loans, are paid retrospectively and projects can take a significant time to complete.

Offers normally remain open for two years and, based on historical information, 76% of the value of grant assistance is ultimately claimed. If the Department receives a written request from a business providing compelling reasons, the period in which the assistance can be claimed may be extended. As at 31st March 2021, the value of outstanding offers amounted to £10.5 million. Based on the historical claim percentage of 76% this represents a value of £7.98 million that the Department may be expected to grant to businesses over a number of years. The accrual as at the end of March 2021 is £7.7m.

The Department made offers to businesses from a wide range of sectors. The size of the businesses was also diverse and ranged from companies employing over one hundred people to single person operations.

4.4. Businesses that received payments under the Financial Assistance Scheme

For the period 1 April 2020 to 31 March 2021

4Tech Ltd	Island Shellfish Processing Ltd
A & B Metal Fabrications Ltd	Isle of Man Meat Company Ltd
Abbey National Treasury Services PLC/Santander International	Kiartys Engineering Ltd (Ramsey)
Aigh Vie Ltd	Kiartys Engineering Ltd (South)
Annexio Services (IOM) Ltd	KPMG LLC

Aperia (IOM) Ltd	Mama Bear's Ltd t/a The Cub House
Astrea Bioseparations Ltd	Manx Technology Group (Technical) Ltd
Boal & Co. Ltd	Manx Telecom Trading Ltd
Bodystat Ltd	Maritime, Oil & Gas Consulting Services Ltd
Bonds Ltd	Mayfly Entertainment Ltd
Bramden Ltd	Memory Lane Games Ltd
Business Doctor Ltd	Mergers & Acquisitions Ltd t/a Signature Acquisitions
Capital International Bank Ltd	Nasaleze Ltd
Celton Manx Marketing Ltd	OceanWeb Ltd
Chase Financial Services Ltd	Pooil Vaaish Black Limestone Ltd
CoinCorner Ltd	PriceWaterhouseCoopers LLC
Cornerstone Architects Ltd	Quad Bike Mania Ltd
Derivco Ltd	Quinn Legal Advocates Ltd
Dot Performance Ltd	Ramsey Crookall & Co. Ltd
DQ Advocates Ltd	Ramsey Park Hotel Ltd
Duke Travel Ltd	RL360 Management Services Ltd
Edgewater Associates Ltd	Roger W Smith Ltd
E-Sign Ltd	Seaboard Overseas Ltd
FHL Holdings Ltd	SLS Optics Ltd
Foraging Vintners Ltd	Sportmarket Services Ltd
Furbate Ltd t/a Hubb	Standard Bank (IOM) Ltd
Gander Ltd	Strix Ltd
Garland, Paula t/a Paula's Kitchen	Swagelok Ltd
Henson Ceramics Ltd	Symless Ltd
Hope & Dreams Ltd	Tartan Group Ltd
IOM Chamber of Commerce (Barclays Eagle Lab)	The Engine Ltd
IOM Creamery Ltd	The Shred House Ltd
IOM Fatstock Association	Triumph Actuation Systems - IOM Ltd

The total of the assistance paid to the above businesses through the FAS in the period 1st April 2020 to 31st March 2021 amounted to £4,071,753.

4.5. Businesses that ceased trading during the year

During the year ended 31st March 2021, the following business which previously received assistance and the assistance remained under terms and conditions, ceased to trade.

The Department's terms and conditions give the period under which assistance is repayable to the Department. The Department policy calculates any repayable amount on a reducing balance basis i.e. the amount repayable on a business ceasing to trade reduces over the time linked to the terms and conditions.

Any amount shown below relates to the amount repayable to the Department under the terms and conditions, not the amount paid out to the business by the Department. After investigating the recovery of the amount, and based on advice to the Department by the Attorney General's Chambers, the Department has written down the outstanding debt.

Business	Amount Due Under T&C's
Cortech Healthcare Limited	12,565.08

The assistance to Cortech Healthcare Limited was made through five grant payment claims from March 2018 through to October 2019, with the total FAS grants paid equalling £20,840.

The amount due and listed in the table above is the sum outstanding under the terms and conditions, not the amount actually paid to the business. It should be noted that while the Company was operational, employee headcount fluctuated from 2017 up until it ceased business. However, the exchequer benefit created via ITIP payments were over £36,000 and outweigh the £12,565.08 liability.

5. Loans and investments via the Enterprise Development Scheme

After January 2020 the Enterprise Development Scheme (EDS) no longer provided equity other than to the current portfolio. After a review in November 2021 the Department for Enterprise has decided to close the Scheme to new applications.

In the period of 1st April 2020 to 31st March 2021 one loan was made of £70,000 to X-Labs Limited. The economic benefit of this additional loan was six new jobs on Island.

6. Authorisations of employment in the national interest

Under section 7(5)(a) of the Control of Employment Act 2014 the Department may exempt a person from the requirement for a work permit if the Department is satisfied that the employment is necessary in the national interest. That Act requires that the Department includes in this report a statement specifying the number of such authorisations in the year, and the reasons for them.

Between 1st April 2020 and 31st March 2021 the Department approved no requests for national interest exemptions from the requirements for Work Permits.

7. Town & Village Regeneration Scheme

This Scheme supported 9 projects in the previous financial year to the value of £36,177, an average of £4,353 per company.

A list of supported companies can be seen below:

Mann Link Travel t/a Richmond Travel	Mr. John Russell
Victoria Street Properties Limited	No 1 Accounts
Cunard Hotel	Garff Commissioners
Leisure Distributors	Goodstuff Restaurants Limited
Douglas Corporation	



Department for Enterprise

St Georges Court, Upper Church Street
Douglas, Isle of Man, IM1 1EX, British Isles

Tel: +44 (0)1624 686400
www.gov.im/enterprise

